

Fullerton Train Museum Newsletter July 2023

Volunteers are the lifeblood of the Fullerton Train Museum — Here they are Making Way for a New Display Car



Volunteers Hard at Work! Thanks to Mary, Monique, Stephan, Anna, Tyler

Our volunteers gathered on the last Saturday of June for the big railcar move. With come-alongs, brute strength and the wheel bar, they moved the Palm Leaf, the ATSF & SP cabooses, approximately 17 feet west on their siding. All of this effort was extended to make additional space to place the future "Display Car" for the museum.

A Display Car will be the future home of Museum's collection of railroad artifacts, paperwork, models and memorabilia that has been gathered for or donated to the museum over the years.



Pictured here are: Tommy, Duane and Marty

Movie Night at the Museum — All are Invited!

Movie night is July 29. 6 PM for wine, movie at 7 PM. The movie will be the 2007 remake of 3:10 to Yuma with Russell Crowe and Christian Bale.

Come and enjoy the night in the comfort of the new air conditioning in the Lounge Car.

3:10 TO YUMA, Lionsgate, 2007

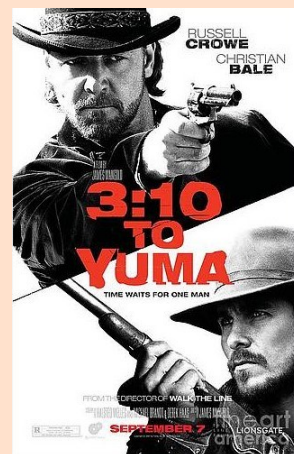
122 minutes, color; rated R

Written by: Halsted Welles, Michael Brandt, Derek Haas

Directed by: James Mangold

Rancher Dan Evans heads into Bisbee to clear up issues concerning the sale of his land when he witnesses the closing events of a stagecoach robbery led by famed outlaw Ben Wade. Shortly thereafter, Wade is captured by the law in Bisbee and Evans finds himself one of the escorts who will take Wade to the 3:10 to Yuma train in Contention for the reward of \$200. Evans' effort to take Wade to the station is in part an effort to save his land but also part of an inner battle to determine whether he can be more than just a naive rancher in the eyes of his impetuous and gun slinging son William Evans. The transport to Contention is hazardous and filled with ambushes by Indians, pursuits by Wade's vengeful gang and Wade's own conniving and surreptitious demeanor that makes the ride all the more intense.

Train scenes were filmed in Elgin, Arizona, the same as the 1957 version. A Southern Pacific 4-6-0, number unknown, pulled a train of various cars brought in from railroad "dead lines" or studio back lots. No more information is available.



Come out and **volunteer** your time at the museum. Do you like to help with:

- event planning and organization
- working on vintage railcars or learning how to work on vintage railcars
- becoming knowledgeable about history and teaching others
- fundraising and public relations and marketing

Contact us at 714-278-0648 and let us know what your interests are..we can find a place for you!



MUSEUM HOURS:

Open the first and third Saturday of every month.
9 am to noon
Work parties on alternating Saturdays

President's message

We have had a very successful year to date, many projects are completed, others are ongoing. Thanks to all of our volunteers, you made it happen. Congratulations!

The organization is in need of a **membership chairman**, any one that is interested, contact myself or any board member. There are several persons that will offer their assistance to the new chairperson. Please contact us.

Your museum continues to make progress and grow. Come out and join us for an Open House, become a docent, join in our work sessions and participate in other events.

Visit the museum and see the progress that has been made.

Harold Benash
President



Volunteers: Tommy, Marty, Harold, George E., on the dock, Dennis W., and Monique



Volunteer: George E.

SWAP MEET— July 29, 2023 Open to ALL to Attend — Vendor Space Available

The Fullerton Train Museum is having a Swap Meet on July 29, 2023 from 9-12AM. We have space for about 5 rail layout groups to sell only various gauges of rail equipment.

The cost is \$50 for a 10x10 space, this does NOT include a tent, tables or chairs. This is an excellent time to sell your equipment you no longer use, make some money for your group and increase exposure for your upcoming events.

Contact FTM for more information at 714-278-0648. You can pay by mailing a check to FTM's PO Box, or Pay Pal link available on FTM's website (donations/memberships) or pay on the day of the event with cash or credit card.

Do you have a student who needs community service hours? We need YOU!

Please help us make our events successful! Volunteers needed to:

- Help decorate the cars a week before the event
- Crowd control and Guest Services

Contact the SCRPA Hotline at 714-278-0648 to volunteer.

Fullerton Train Museum

Mission: The Fullerton Train Museum will be the region's destination attraction that serves as a center for gathering, preserving and interpreting significant railroad artifacts -- including railcars, photos, charts, plats, maps, books and such dioramas as depots and model trains.

Vision: To provide an educational atmosphere that vividly brings to life the cultural and historical importance of rail transportation through the preservation, conservation and display of historic railcars and memorabilia.

Railroad Operations Committee Update — ROC Three BIG Project Updates

AIR CONDITIONING — The warm weather will be no problem for the museum's two Union Pacific railcars—the dining/café car and the lounge car — the air conditioning project has been able to happen because of major donations and many hours of volunteer time! **Thank you** to all who made this project happen.



The air conditioning installation project included the following: electrical, condenser unit, modifications to the ceiling, refrigerant and condensate lines, related openings, pressure testing and filling the system with Freon product.

The following volunteers made it happen: Tommy, Duane, Marty, Harold, Alex, Stephan.

The testing and startup of the system was done by Larry Aandahl of Lima Heating & Air Conditioning Service Company. Larry's work was a donation to the Museum.



The Museum Adds a Reference Library

The Palm Leaf railcar is now home to the FTM Reference Library. This was not an easy project — one of the rooms in the car was refurbished to make room for the library. The project entailed removal of the bathroom and shower facilities, design and construction of shelving, painting the room and shelves, and then placement of the reference materials.

A BIG thank you goes to the volunteers who made this happen: Harold, Duane, Bob, Rocco, Dave and everyone that removed and carried the boxes of books to the Palm Leaf.

Come on in and peruse the materials which range from history books on the area and the railroads that built it, to the modern railcar.



New Bar Stools for the Café Car!

The Cafe' car has received much needed bar stools.

The eight stools were donated in memory of loved ones and family by:

R. Dennis White
Laurene Schulze
Eric Shishima
Mary Proctor
Carol Barber
Dave & Kathy Norris
Harold Benash
Mr. & Mrs. Geoff Moody

A plaque honoring their loved ones and families is on display in the Cafe' car.

The museum extends a BIG thank you to all who made this possible and thank Harold Benash for researching the stools and then taking the time to install them!



**Fullerton Train Museum
P.O. Box 5195
Fullerton, CA 92838-5195**

Address correction requested

IN THIS ISSUE

**Cover Story: Volunteers are the Lifeblood,
Movie Night**

Page 2: President's Message & Swap Meet Info

Page 3: ROC Updates



Fullerton Train Museum Newsletter
is published quarterly at Fullerton, California, and is the official publication of The Fullerton Train Museum and
The Southern California Railway Plaza Association, Inc.

P.O. Box 5195, Fullerton, CA 92838-5195

Visit us on the web at www.fullertontrainmuseum.org

SCRPA is a California Nonprofit Public Benefit Corporation
IRS Tax Exemption No. 33-0776081 (SCRPA)

Editor: Allison Benash

Send your letters to the editor to the address above

Any article or feature published in Hot Rail! may be reprinted in whole or in part provided that proper credit is given the source.

o o o o o o

SCRPA BOARD OF DIRECTORS and COMMITTEE CHAIRS

Harold Benash: President
Allison Benash
George Engelage IV
Denis Hergenreter
Jim Hoffmann, Movie Night Chairman and Docent Chairman
David Norris: Quarterly Dinner Program Chairman
Mary Proctor: Treasurer/Secretary
Stuart Proctor
R. Dennis White
Eric Shishima
Martin Kluck
Kathy Norris
Rudolph Morgenfruh
Anastasia Norris

SCRPA APPOINTED CHAIRPERSONS

Secretary	tba
Poster Contest	Kathy Norris
Activities	tba

CALENDAR OF EVENTS

Board of Directors Meetings at 9:00 a.m.
Second Saturday of every Month

Quarterly Membership Dinners
Location tbd
at 6 p.m.

Second Wednesday of
January, April, July, October

Railroad Operations Committee Work Days
9 am – noon at the rail cars
Every Saturday

Fullerton Train Museum Hours
Free Tours
1st and 3rd Saturday of every month

Movie Night —
TBD