

HOT RAIL!

NEWS & EVENTS



Published by Southern California Railway Plaza Association

May 2022

SPEED COMES TO THE MUSEUM! The Speeder Restoration Project

By Wendell Hanks

Speeders were used by the railroads until about 1991 to carry workers and tools to rail repair sites. Obviously, the distance from a rail problem and the nearest labor source was an issue. So most of the problem solving, using personnel carried by speeders, was close to major points of operation. Most speeders featured a 20 hp gasoline engine.

What replaced the speeder is the familiar use of pickup trucks with cab-activated steel wheels that are lowered making contact with the rails when the crew leaves the pavement attending to a repair. While on steel wheels, the truck's conventional tires make rail contact powering the truck.



Front of the powered speeder awaiting engine

Our restoration crew has restored two six passenger speeders, keeping one powered and convert-



Completed passenger speeder

ing the other as an unpowered passenger car. With the lead speeder pulling, the passengers will now close their museum visit by "RIDING THE RAILS" on track out the gate and down to the end of the parking lot and back. As soon as we have the engine rebuilt and installed, we will start "RIDING THE RAILS!"

If you know of anyone with both the tools and experience needed to rebuild small gasoline engines, please let us know.

President's message

Summer is fast approaching and your museum has been busy and the many volunteers have been hard at work!

Besides the Saturday Open Houses, we will have a few **Events** upcoming for all to attend.

The **Quarterly Dinner** is on July 13 at 6 PM at the Sizzler Restaurant, in Fullerton, come join us, have dinner and hear about all that has been going on at your museum.

Plus, we will have our first **Movie Night** in a while. Mark your calendar for July 16. The location is at the museum and time tbd.



Railstream.net tower

Additionally, our Open House weekends have been very successful, our docents are doing an excellent job, thank you to all docents. Our workers have been very busy with all of the projects around the museum, thank you to all the workers.

And I like to give a warm welcome to Anastasia Norris who was elected to the Board of Directors in March. Welcome Anna.

One more thing, there is a new camera tower that streams live train traffic online from the depot. See the story on page 5.

Harold
President, Fullerton Train Museum



Eric and Harold working on powered speeder's controls

Amazon Donates Money to the Museum EVERY Time YOU Shop if You Use the Amazon Smile Program

Much appreciation to all of you who are shopping on Amazon Smile. That means you, our members, are telling your family and friends how they can help us raise money to continue in our restoration of the cars and cabooses.

Just a reminder on how easy it is to use AMAZON SMILE: **Step 1**-Type in Smile.Amazon.com **Step 2**-Type in Southern Calif. Railway Plaza Assoc. as the name of the group they will support. **Step 3**: Bookmark the Smile.Amazon page. **Step 4**: Use that bookmark when going to AmazonSmile. Remember, for each Amazon Smile purchase you make, Amazon will donate a percentage to our organization.

Think of it as a sustaining membership. Thank you and keep shopping Amazon Smile and supporting the Fullerton Train Museum.

Quarterly Dinner Meetings

**July 13 Sizzler Restaurant in Fullerton
Corner of Harbor Blvd and Brea Blvd
6 pm no host dinner then 7 pm meeting**

Movie Night

**Mark your calendars for July 16 at the
museum. Time to be determined.**

Fullerton Train Museum

Mission: The Fullerton Train Museum will be the region's destination attraction that serves as a center for gathering, preserving and interpreting significant railroad artifacts -- including railcars, photos, charts, plats, maps, books and such dioramas as depots and model trains.

Vision: To provide an educational atmosphere that vividly brings to life the cultural and historical importance of rail transportation through the preservation, conservation and display of historic railcars and memorabilia.

Railroad Operations Committee Update — ROC

By Harold Benash

Project Updates: Speeder trailer is 95 percent complete, speeder dashboard is cut, needs sanding and paint, engine repair is ready to start. Hardware sorting and organization is winding down.

The recently donated baggage cart is looking for new decking and paint, hardware for the newly cleaned curtains needs to be installed, window installation needs a jump start, site maintenance and cleanup are ongoing.

Upcoming Projects: Site security — looking for a camera system and lighting.

Air conditioning for the two UP Cars, including electrical. Crossing Signals need wiring and will move the scale to the east end of the site, just to list a few things upcoming in the future.

Volunteers Wanted for Many Opportunities

Come out and volunteer your time at the museum. Do you like to help with:

- event planning and organization
- working on vintage railcars or learning how to work on vintage railcars
- becoming knowledgeable about history and teaching others
- fundraising and public relations and marketing

Contact us at 714-278-0648 and let us know what your interests are....we can find a place for you!

Membership — New and Renewal

It is time for our Annual Membership Drive. Your membership supports the Fullerton Train Museum in so many ways. We thank you in advance and ask you to continue your needed support by renewing or joining today.

Your financial support continues our growth and development. We are proud to say that 2021 has been a successful year. Visitors came back in force, and volunteers are back and working **harder** than ever.

As with most non-profits, our expenses continue to rise. Your tax-deductible membership is vital to the success of the Fullerton Train Museum. Your membership also allows you to volunteer – to become a docent or work on the cars and grow the museum.

Enclosed is our membership application for renewals and new members. You can also renew and join on our website and pay via credit card. Click on the “The SCRPA” tab, then click on “Membership” to pay by credit card.

Visit www.fullertontrainmuseum.org to join and learn more. Again, thank you for your continued support, if you have any questions, please call us at 714-278-0648.

Do you have a student that needs community service hours? We need YOU!

Please help us make these events successful!

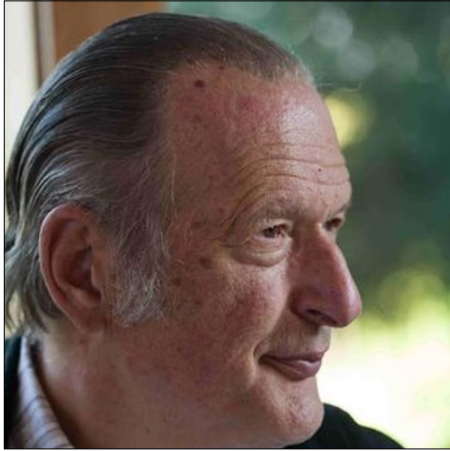
Volunteers needed to:

- Help decorate the cars a week before the event
- Pass out candy the day of the event
- Crowd control

Contact the SCRPA Hotline at 714-278-0648 to volunteer.

Charles Forsher

By Dennis White



Many Of you old timers will remember Charles Forsher, a member of SCSRA (a heritage organization of SCRPA), FRPA, and the 2008 recipient of the Clarence Ridenour Award. Charles was the creator of the **Travels With Elliott** series of articles in Scenic's **Headlight** newsletter, outlining his rail fanning escapades with Elliott Alper (SCSRA/SCRPA) in the Southland.

Several years ago, Charles moved to Ballard, Washington to be closer to family, but has stayed in touch with his railroad buddies in SoCal. Charles, who always loved the old Pacific Electric Interurbans found a similar system in Seattle with *Sounder Transit* light rail and has been spending time tracking down old, predecessor railroads, abandoned rights of way and new construction as *Sounder Transit* continues to grow. Being familiar with the railroads of the Northwest, especially in the Seattle area, I find his reports to be entertaining and enlightening.

Charles writes:

"When I lived in Los Angeles, I fantasized about living in that great city back in the nineteen twenties. Well here it is a hundred years later, and Seattle is in the midst of a rail building boom, similar to the thousand-mile system of the Pacific Electric. While some of the



P.E. were acquisitions, very little of the new Sound Transit routes harken back to the Seattle Trolley car days save bits and pieces of the new Hill Street light rail, and a stretch to the south which was an interurban route. Otherwise, the Sound Transit's new routes rely heavily on subways and spectacular flyovers."

One of Charles' discoveries was the long defunct Seattle Renton & Southern Railway (SR&S), which had the distinction as the first interurban railroad in the Puget Sound area, being founded in 1891. In 1912, its name was changed to the Seattle & Rainier Valley Railway. The line suffered from safety problems, lack of capital, and lax management.

Watch The Trains at the Fullerton Train Station 24/7 Railstream.net is live

RailStream is the best live video railfan site around! The site has 28 live cams and 18 live railroad radio feeds throughout USA and Canada...



The Fullerton Train Station Rail Stream is up and running and can be accessed 24/7 by going to **www.railstream.net**, click on live cameras, click on Fullerton Train Station, scroll up to the station site (BNSF Locomotive), click on the triangle let the advertising end and the Fullerton mainline will come up. Enjoy.

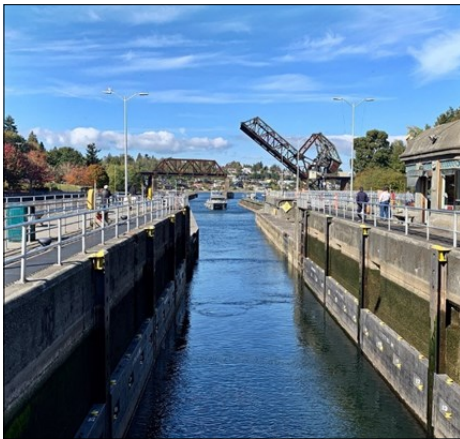
Here are a few photos of the camera and tower installation.



FRIENDS OF SCRPA – Charles Forsher continued...

The City of Seattle attempted to buy it in 1914 and finally (in 1936) revoked its franchise and ordered that its rails "*be pulled up immediately.*" In 1999, the old route of the Renton Interurban prompted a new controversy as Sound Transit proposed to run "Link" light rail trains down Rainier Ave. and Martin Luther King Jr. Way (formerly Empire Way). Few local critics recalled that their Rainier Valley neighborhood owed its existence in large part to the "light rail" system of a century earlier.

Apart from his fascination with Sound Transit, Charles keeps a sharp eye on the ex Great Northern Bridge Four, AKA Salmon Bay Bridge, spanning the Ballard locks on the Lake Washington Ship Canal between Seattle and Everett on the BNSF Railway. The bridge, a bascule type draw bridge dates to 1914 and operates many times a day. Charles spends lots of time at the adjacent park photographing the bridge in operation and feeding water fowl, squirrels and crows, all of which know him very well.



Bridge Four, Ballard Locks, one of Charles' dependents and typical Sound Transit station.
Photos by Charles Forsher and others.

**Fullerton Train Museum
P.O. Box 5195
Fullerton, CA 92838-5195**

Address correction requested

IN THIS ISSUE

Cover Story: Speeder Update
**Page 2: President's Message & Amazon Smile
Quarterly Dinner and Movie Night
Announcement**
Page 3: ROC, Volunteers Needed, Membership
Page 4: Friends of SCRPA Article
Page 5: Railstream.net

HOT RAIL!

is published quarterly at Fullerton, California, and is the official publication of The Fullerton Train Museum and
The Southern California Railway Plaza Association, Inc.

P.O. Box 5195, Fullerton, CA 92838-5195

Visit us on the web at www.fullertontrainmuseum.org

SCRPA is a California Nonprofit Public Benefit Corporation

IRS Tax Exemption No. 33-0776081 (SCRPA)

Editor: Allison Benash

Send your letters to the editor to the address above

Any article or feature published in Hot Rail! may be reprinted in whole or in part provided that proper credit is given the source.



SCRPA BOARD OF DIRECTORS and COMMITTEE CHAIRS

Harold Benash: President
Allison Benash
George Engelage IV
Wendell Hanks, Vice President
Denis Hergenreter
Jim Hoffmann, Movie Night Chairman and Docent Chairman
David Norris: Quarterly Dinner Program Chairman
Mary Proctor: Treasurer/Secretary
Stuart Proctor
R. Dennis White
Eric Shishima
Martin Kluck
Kathy Norris
Rudolph Morgenfruh
Anastasia Norris

SCRPA APPOINTED CHAIRPERSONS

Secretary	tba
Poster Contest	Kathy Norris
Activities	tba

CALENDAR OF EVENTS

Board of Directors Meetings at 9:00 a.m.
Second Saturday of every Month

Quarterly Membership Dinners
Location tbd
at 6 p.m.

Second Wednesday of
January, April, July, October

Railroad Operations Committee Work Days
9 am – noon at the rail cars
Every Saturday

Fullerton Train Museum Hours
Free Tours
1st and 3rd Saturday of every month

Movie Night —
July 16 at the Museum

Fullerton Train Museum

presents the

HOT RAIL!
NEWS & EVENTS



Published by Southern California Railway Plaza Association