

Fullerton Railway Plaza Assn. &  
So. Calif. Scenic Railway Assn.  
*present the*

# Hot Rail!

newsletter



**The latest on efforts to build and maintain  
a permanent railroad attraction in Fullerton, California**

Issue IV, Number 4

Spring 2007

## DISNEY'S C.K. HOLLIDAY STEAM ENGINE AND KALAMAZOO HAND CAR WILL OPEN RR DAYS 2007

**By Fred Canfield, Railroad Days Coordinator**

A favorite old-time Disneyland steam locomotive is putting on a fresh face to take the spotlight for the first time at this year's Fullerton Railroad Days, along with a meticulously restored handcar presented to Walt Disney by the Kalamazoo manufacturing company of Michigan. Also new for 2007 will be tours of two historic cabooses that have found a home at the Fullerton Train Station.

The Disneyland Resort will display the C.K. Holliday Steam Engine, which has served as engine No. 1 of the Disneyland Railroad freight train since the amusement park's opening in 1955. Named for Santa Fe Railway founder Cyrus K. Holliday (1826-1900), the engine was made for Walt Disney Co. and is being fully restored to its Opening Day brilliance.

Disneyland Resort will also present the Kalamazoo rail handcar that has long been displayed in front of Disneyland's Main Street train station. It will travel to Fullerton Railroad Days so the more than 40,000



*The C.K. Holliday Steam Engine.  
© waltstoytrains.railfan.net*

expected weekend visitors can have an "up-close and personal" look at a genuine "pump"-style handcar.

The Southern California Scenic Railway Association will offer tours of its two vintage cabooses set up on a side-track at the Fullerton station: the Atchison Topeka and Santa Fe Cupola Caboose No. 999110 and Southern Pacific Bay Window Caboose No. 4049.

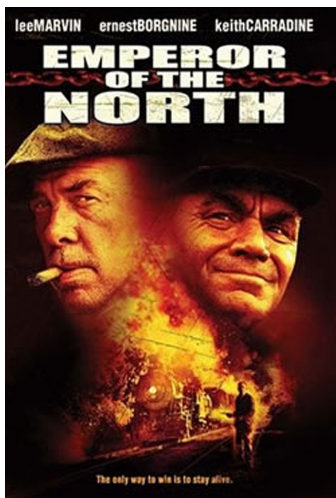
Fullerton Railroad Days 2007 will be on May 5th and 6th which is less than a month away. This will be the

NINTH annual event and will be a tremendous celebration with the support of the City of Fullerton and YOU. The Railroad Days Committee has been working hard with many of the same volunteers as past years. But we also need NEW volunteers and would like YOUR help.

We have already confirmed a number of participants for 2007, and the few remaining booths should go quickly.

We need volunteers to distribute posters and fliers to local merchants, and people to solicit merchandise donations. Fliers and posters will be available at the April 11th Dinner and at the FRPA office at 1661 E. Chapman Ave., #1G, Fullerton, if you call ahead.

We also need help Friday afternoon getting the event set up and looking great. Please come by and help us.



**Movie Night:  
April 21**

***Emperor of the  
North (1973)***

**Wine Tasting: 6 p.m.;  
Movie: 6:30 p.m.**

**Fullerton Museum  
Center Auditorium  
301 N. Pomona Ave.,  
Fullerton**

***Free for FRPA/  
SCSRA members  
and guests***

**FREE PARKING  
ACROSS THE STREET**



*The Kalamazoo Hand Car. © Steve DeGaetano*

See the 2007 Calendar on page 6

# NEWLY-DONATED RAIL THEMED SLIDE COLLECTION FEATURED AT SPRING DINNER, APRIL 11

**By Stan Swanson, FRPA General Meeting Chair**

Recently Mrs. Bonnie Sutton of Whittier, CA, donated to the FRPA a collection of 35mm color slides depicting rail cars and locomotives in operation. The Historical & Modeling Committee has been busy cataloging and scanning these slides, a significant addition to the FRPA Library Collection. A sampling of the slides will be presented at the FRPA Spring Quarterly Dinner Meeting on April 11 at the China Buffet in Fullerton. This donation is a great example of an "acquisition of opportunity," and the FRPA considers itself fortunate to have been offered the collection.

The slides portray hundreds of trains from all over the western United States. So far, the H&MC has identified Bakersfield, Glendale's Taylor Yard, Barstow, San Bernardino and Cajon Pass. The pictures are mostly Santa Fe and Southern Pacific, but other railroads are represented as well, including early shots of Los Angeles Live Steamers 1½" scale operations from the 1950s. Identifying and cataloging these slides is a monumental project that will take months to complete, and we are fortunate that the H&MC will offer us this 45-minute program representing the scope of the collec-



*Above is a picture of 2-6-2 prairie ATSF 1010 in red paint, date unknown. This locomotive is restored and resides at the California State RR Museum in Sacramento, and fortunately is back in black and silver paint. Below is a LARY "J" car on the way to Huntington Park and South Gate, circa 1955. From the slide collection donated to FRPA.*



tion. Team leader Jack Barich, along with Harold Benash, Dennis White, and Dave Norris will put the show together.

We are again expecting a large attendance of over 100, so plan now to attend. Bring your friends and acquaintances interested in railroading and railroad history as it applies to Fullerton and southern California. You will hear the latest on Fullerton Railroad Days 2007, reports on the final Community Planning Workshop, an update on the museum plans and Fullerton Redevelopment progress, and other various activities of our association. That's Wednesday, April 11, at the China Buffet, 104 West Orangethorpe Avenue, Fullerton. Mixer starts at 6 p.m. Dinner is \$15 per person which includes all you can eat, soft drink, and gratuity.

## Fullerton Railway Plaza Association

### Our Vision Is

To create a large community-supported premier interactive railroad attraction that would include a Santa Fe heritage railroad museum and restoration facility for the purpose of bringing together businesses, government and the community to preserve our national rail heritage and provide an educational experience for our youth in a meaningful, exciting, and fulfilling manner.

### Our Mission Is

To educate our youth and provide all people an historical insight into the numerous contributions the railroads have made to the creation and economic development of the City of Fullerton, the County of Orange, and Southern California from the 19th century to the present and into the future.

**WWW.TRAINWEB.COM**

Rail Travel - Rail Industry  
Model Railroading - Railfanning

Most extensive and visited railroad website in the world  
including live rail video at [www.RailCams.com](http://www.RailCams.com) !

## **SCSRA Annual Dinner: Something New!**

This year, we are combining forces with the Historical and Modeling Committee (H&MC) and together we will have

### **DINNER AT THE DEPOT**

**Saturday, July 28**

#### **With Our Caboosees in Fullerton!**

Time and menu yet to be set (details in next issue)

Estimated cost \$10 per person

After dinner, yes, we will have awards and door prizes

**RSVP Required - See page 7**

*Hope to see you there!*

The latest on Fullerton Railroad Days is on the web! See <http://www.scrmf.org/rrdays> for the full participant list.

## **MATCHING GRANTS**

**By Gordon Bachlund**

Many firms have charitable matching gift programs whereby an employee may have money withheld for donation to his/her favorite qualifying organization, and whereby the firm will match all or part of the donation. Recently, SCSRA member Paul Core, an employee of Microsoft, directed his 2007 pledge to the FRPA, and Microsoft so notified Dr. Hopping. We are grateful to Paul for his continued support.

Has your or your spouse's employer a matching grant program? If you don't know, you may ask your Human Resources or Personnel Department. If you do, we would urge you to consider arranging for such a grant.

Most firms restrict matching grants to certain types of charitable and educational organizations, and the FRPA will probably qualify. If so, the designated recipient may be listed as the FRPA, 1661 E. Chapman Ave., Unit 1G, Fullerton, phone 714-278-0648, fax 714-871-6939, and name Dr. Richard Hopping as the point of contact.

Please mention this to your friends, neighbors and associates who may wish to support FRPA. Thank you.

## **APRIL IS RAILROAD MONTH AT FULLERTON LIBRARY**

**By Dennis White**

From March 31 through May 4, 2007, three of FRPA's photo boards and an N-scale diorama will grace the main floor lobby to promote the creation of a Rail Experience in Fullerton and announce Fullerton Railroad Days 2007.

FRPA's railroad book collection, currently on loan to the Fullerton Library, will be featured on a special book stand adjacent to the picture boards and are available for check-out with a current library card.

The Orange County Modular Engineers, many of whom are FRPA members, will display beautiful model railroad equipment throughout the month in the library's glass display cases.

To help the Fullerton Library promote its extensive VHS and DVD film collection, Gordon Bachlund is loaning an original poster of the 1976 comedy hit, *Silver Streak*, with

Gene Wilder, Jill Clayburgh and Richard Pryor smiling as an F unit crashes through the wall of Grand Central Station.

Wednesday, April 25, at 6:30 p.m., the Fullerton Public Library presents an evening of Railroading in Fullerton with a lecture by FRPA member David Norris on "The Symbiotic Relationship Between the Railroad & the City of Fullerton." After Dave's presentation, the library will screen their copy of *The General*, starring Buster Keaton. Plan to spend time in the library itself on movie night. In addition to the already mentioned month-long displays, Harold Benash will display part of his extensive Lionel Train collection and Dennis White will share miscellaneous railroadiana including ticket validation stamps, a brakeman's lantern and a caboose marker light.

For more information on April rail events at the Fullerton Library, please contact Melinda West, Reference Librarian, 714-738-6380 or Dennis White, 714-871-4341.

## **2007 FRPA MEMBERSHIP AT 199**

**By Norma R. Goble, Membership Chair**

FRPA currently has 199 paid members for 2007. There are seven new members and five renewals from 2005. There are still 53 of you who have not yet renewed. Please hurry and send in your renewals so I don't have to send you a "friendly reminder." Hopefully, I will be able to add a whole lot of you to the "paid up" member list by the next Quarterly Membership Dinner Meeting in April.

Thank you for continuing to hand out membership applications.

## **CABOOSE UPDATE**

**By Sue Kientz**

The latest on SCSRA's two cabooses is, we're waiting for another move — into the fenced area — before planning further activities. The word is that by Fullerton Railroad Days, the two cars will find their place in the enclosure. SCSRA will be offering car tours and DVD sales of our move to Fullerton (with a preview of the video running inside one of the cars).

**The printing of this newsletter was generously donated by:**

**TALL MOUSE**  
Arts, Crafts & Custom Framing

**WE'RE YOUR HOBBY SUPERSTORE!**  
We carry a full line of Woodland Scenics,  
rockets, models, art supplies,  
and MUCH MORE!

Visit us at [www.tallmouse.com](http://www.tallmouse.com).  
Or visit us at any one of our 4 locations.

Cerritos	Laguna Niguel
562-865-0800	949-360-5777
Irvine	Yorba Linda
949-551-3300	714-996-0101

We've also decided that THIS Annual Dinner should directly involve the cabooses, and so we have been planning to have our dinner at the depot. And maybe a month later than usual. Hmm, Dinner at the Depot, in July? That sure sounded like the H&MC event that happens each summer. So instead of conflicting with our sister group, we contacted Dennis and Harold and asked them if perhaps we could combine forces this year, and have one big event at the end of July. I guess it should be no surprise at how accommodating H&MC was and an agreement was swiftly made to change SCSRA's Annual Dinner and H&MC's Dinner at the Depot to Saturday, July 28. Stay tuned in next issue for more details. If you are an SCSRA member, please fill out and mail (or email) in your RSVP (so we have a rough head count) and Ridenour nomination. We need a lot of lead time for deciding on the award recipient and getting the award plaque made.

In the meantime, we have hundreds of rail fans watching over our cabooses day and night. The rail fan presence truly seems to be protecting the two cars from tagging (knock on wood) and other vandalism. We had to install some plywood on the car ladders a few weeks ago, to keep train watchers from climbing up and sitting on the roofs to get a better view of passing rail activity. Mike Vitale went down and took care of that task for us. Mike also returned last week to check on a loose window screen that Dennis White reported to us as a possible break-in (again, thanks to a non-FRPA railfan on the lookout!). Once inspected, we realized this was a long-standing problem with that screen, and Mike removed the screens to better the overall appearance while we make repairs. Mike then painted the bare plywood to begin sprucing up the cars for their first-ever Fullerton Railroad Days appearance!

At press time a Caboose Cleanup Saturday will take place mid-April, exact date and time to be announced at the April Quarterly Dinner, or watch our online Calendar at [www.scsra.org/calendar.html](http://www.scsra.org/calendar.html) for details.

## HISTORICAL & MODELING COMMITTEE SPRING REPORT

*By Dennis White, H&MC Secretary and Editor*

FRPA's eight-panel historical photo story boards and 4 x 8 foot HO scale diorama of the Fullerton Depot area circa 1950 finished the winter train show season with a visit to Anaheim Convention Center for the Great Train Expo January 6 & 7, 2007. Always well received by the rail enthusiast community, visitors to the Expo kept FRPA members busy with questions and comments for both days. (Buena Park Mayor Art Brown and his wife visited the booth on Sunday.) The Anaheim show marked the seventh year and 92nd time that FRPA's boards and HO display presented the FRPA to the railfanning public. Over the past seven years, the well-traveled display visited San Diego, San Bernardino, Ventura, Fairplex-Pomona, Anaheim, Arcadia, Costa Mesa and Reno, Nevada, and many other venues.



*SCSRA's AT&SF Cupola Caboose gets a safety addition with a nice coat of white paint for beautification. Photo (and paint job) by Mike Vitale.*

On March 11, 2007, H&MC and the historic photo display spent the day at the Nixon Library in support of the Orange County Council, Girl Scouts of America. The girls celebrated 95 years of scouting with an educational day of historic displays, demonstrations of art, crafts and food. Almost 5,000 Girl Scouts participated, from Brownie to Senior Scout. Scouts participated in a scavenger hunt of knowledge, visiting each booth, reviewing the displays and asking questions assigned in advance by scout leaders. Brownies had to name three ways to get out of Orange County - Train, Plane,

Automobile, Bus, Boat, Walk and Bicycle were the most popular answers given. Older girls had to discover when the railroad came to Fullerton, how trains had changed from the 1940s to today, how a diesel locomotive works, and what to expect in future transportation. The overwhelming majority had never heard of a steam locomotive. FRPA booth members Harold Benash, George Barlow and Dennis White kept very busy talking about these things to 5,000 scouts! Almost all of the parents were aware of FRPA, had visited Railroad Days in the past and planned on visiting again this year.

H&MC's old 4' x 8' diorama of Fullerton Depot has been retired after seven years of travel, set-up, teardown and storage. It held up very well, much better than the crew who displayed it! A new two-section 8-foot module is nearing completion and will debut at RAILROAD DAYS 2007. The new display features a much higher level of detail, with scale models of the actual packinghouses and other businesses that once inhabited the area around Fullerton Depot. Unseen by the viewing public, but important for H&MC members, will be a simplified set-up and take down system that does not entail placement or removal of buildings and details each time the units are moved.

Fourteen H&MC members attended the third Transportation Center Planning Workshop presented by the City of Fullerton March 8, 2007 and several committee members took the opportunity to stand up and address concerns or comment on the presentation. Members were optimistic about the presentation.

April will be an extra busy month for H&MC membership. H&MC kicks off the pre-Railroad Days 2007 with installation of an FRPA display in the library March 31, which will stay until May 4, 2007, the day before Railroad Days. On April 25, Fullerton Public Library presents Railroads in Fullerton, an evening of lectures and a movie, with railroad support by the H&MC. On April 28, H&MC will spend the day on Fullerton Plaza (Wilshire Avenue behind the Fullerton Museum) for the City's Fifth Annual Faces of Fullerton, as part of the previous evening's Night In Fullerton event.

The Historical & Modeling Committee is always looking for members. If local history, rail history, railfanning or model railroading (any scale), interest you and you would enjoy fellowship with others who share these interests, we invite you to become a part of our growing committee. It is a great way to become an active member of the FRPA. Meetings are held 7 p.m., the fourth Tuesday of each month (except December) at St. Paul's Lutheran Church,

(corner of Las Palmas and Harbor Boulevard), Fullerton, California. Please contact Dennis White (714-871-4341) or Harold Benash (714-525-6266) for directions or any questions regarding H&MC.

## MODELING

# NEW FULLERTON DEPOT MODULE FEATURES SELECTIVE COMPRESSION

*By Dennis White, FRPA Historical & Modeling Committee*

When the Fullerton Model Railroad Historical Society (FMRHS), forerunner of the current Historical and Modeling Committee, built its first 4 x 8 diorama of the Fullerton Depot area a little over seven years ago, they decided to build everything exactly to scale, the same as most architectural models. That decision created a large table with lots of open space and large buildings that while accurate, did not project the "feel" of the depot area.

For the last seven years and ninety-two shows, members hauled the diorama from storage, loaded it into a van or truck, set it up, displayed it and then tore it down and hauled it back to storage, taking a toll on the models, the diorama table and the volunteers. Something had to be done.

About two years ago, H&MC member Martin Kluck designed a metal framed folding module called the Marty Module®, which he planned to market to members of modular model railroads. The committee saw early prototypes of his modules, realized Marty had actually "invented a better mouse trap," and decided it was time to retire the big 4 x 8 table and build a new and more extensively detailed diorama using Marty Modules.

Last January 2007, H&MC obtained two 2 x 4 foot Marty Modules and began building a new diorama of the Fullerton Depot area. The first order of business was to align the two modules accurately using an alignment tool borrowed from the Orange County Modular Engineers, a local modular club that has worked closely with H&MC for many years. We laid track on HO cork roadbed using the modular group's standards so our model can be incorporated into OCMR's layout.

The signature piece for the old diorama was a beautifully made HO scale model of the Fullerton Depot complete with wrought iron treatments to the windows, roof trim and Fullerton sign. The model, built to 3.5 mm = 1 foot was



*The previous Fullerton Depot Module (above and below). Photos by Dennis White.*

modeled full scale, not utilizing selective compression, which is normal for model railroading. The model station is quite large, measuring almost four feet in length. While the full-scale station model found a home on the new display, all other buildings for the new display will be modified using selective compression.

Museum models and model railroads, regardless of scale or the amount of space available, all utilize selective compression as a necessity. For example, the 1950 era platform for the prototype Fullerton Station stretched from Lemon Street all the way to the sidewalk on Spadra (now Harbor Boulevard). A full-scale platform in HO scale without selective compression would stretch almost fifteen feet. Obviously, something's gotta give! When a model is built, it is actually creating a caricature of the original. Familiar details are added, major buildings modeled, and those buildings are usually modeled in a scale slightly smaller than HO and doors and windows are smaller, the number of windows may be reduced slightly, et cetera. The mind takes in all of the detail and forgets what isn't there. An excellent example of compression is right in our back yard. At Disneyland, all buildings are built on a reduced scale, and the second stories are even smaller than the ground floor. The human eye can be fooled into recognizing a familiar scene reproduced in miniature without comprehending that it is actually a highly compressed compromise of its full-size prototype. This illusion deceives the mind – examples are movie sets, stage props, museum displays, model railroads and Disneyland's Sleeping Beauty Castle.

With the track installed, wired and fully tested, modeling the new display began in earnest. The ground level for the station area rose to rail level as it is on the prototype, and platforms have been modeled in brick, just like the original. Models of Granada Packinghouse, Corcoran Paper, Caltone, Blue Goose Packinghouse, and the Dodge dealership on the NW corner of Spadra and Santa Fe are under construction and will be presented just as they were in 1950.

The new layout, exactly half the size of the old one, will still have about 90 percent of the features incorporated on the original, but look



much more authentic because of the compression.

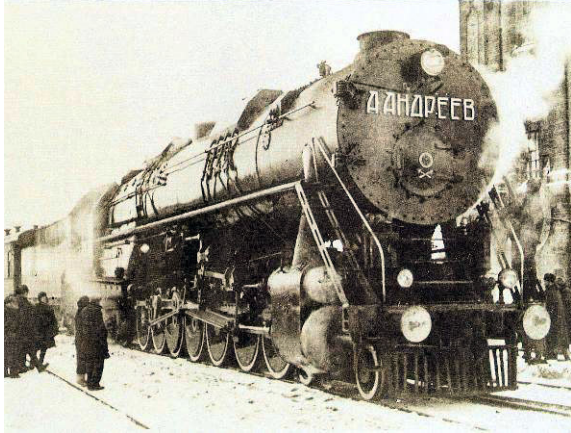
Be sure to visit the H&MC booth at Railroad Days 2007, May 5 and 6, and check out the new display.

## TRIVIA

### THE "OTHER" BIG BOY

By Dennis White

Most people think of UP's big ALCO 4-8-8-4's when



they hear the term "Big Boy" applied to a railroad locomotive. However, describing what is biggest when it comes to locomotives often requires other criteria, such as length, axle loading, drawbar pull, horsepower or gross weight. Many railroaders consider the number of axles on a single, rigid frame to be the ultimate measure of bigness. The greatest number of drivers put on a rigid frame in North America sat under the boiler of Union Pacific's 88 massive 4-12-2's, which had six axles mounted on a single frame. UP's 4-12-2's enjoyed the distinction of being the biggest locomotives in the world until 1935 when the Russians unveiled their "Big Boy."

In 1930, Soviet railroad engineers toured some of America's railroads, finding the great success of the Union Pacific 9000 class 4-12-2 particularly inspiring. Returning to the Rodina, they went to their drawing boards and after four years of intense work, designed a 2-14-4, which they dubbed Big Boy. Lacking the facilities to build such a behemoth, the Soviets looked to Krupp Werk, Essen, Germany for help. After the frame, running gear and boiler were completed; they towed the unfinished engine to Lugansk, Russia where workers replaced the original two wheel lead pony, which caused problems during the tow, with a four-wheel truck. Engine house crews finished the cab and other minor details, set-up and test fired the engine in early 1935. The engine made one trip to Moscow in the spring of 1935 for exhibition.

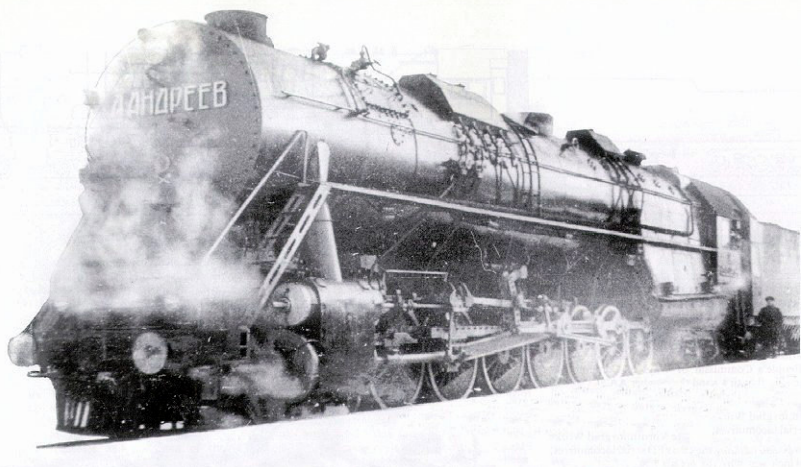
The 4-14-4, dubbed "Stalin's Engine" by the engine crew, steamed poorly due a combination of poor firebox design and low quality coal, had a weak draw bar, and did not fit on any turntables. It tracked poorly due to its long wheelbase, derailed constantly, even when crawling along at very low speed. The long, rigid wheelbase damaged every set of switch points the locomotive traversed. Blinding the three middle sets of drivers did not help matters and the Soviet railroad withdrew the locomotive from further testing by mid-summer 1935 without it ever pulling a revenue train. An embarrassment, they quietly put "Stalin's Engine" into storage and kept it under lock

## 2007 Calendar

- |           |  |
|-----------|--|
| April 11  | <b>FRPA Quarterly Dinner Meeting</b> , 6 p.m., China Buffet, 104 W. Orangethorpe Ave.  |
| April 21* | <b>Movie Night: <i>Emperor of the North (1973)</i></b> ,* 6:30 p.m. with Wine Tasting at 6 p.m. Fullerton Museum Center Auditorium |
| April 24  | <b>H&amp;MC Meeting</b> , St. Paul's Lutheran Church, 111 W. Las Palmas Dr., Fullerton, 7 p.m.                                     |
| May 5-6   | <b>Fullerton Railroad Days</b> , 9 a.m.-5 p.m., Fullerton Metrolink Station  |
| May 22    | <b>H&amp;MC Meeting</b> , St. Paul's Lutheran Church, 111 W. Las Palmas Dr., Fullerton, 7 p.m.                                     |
| June 26   | <b>H&amp;MC Meeting</b> , St. Paul's Lutheran Church, 111 W. Las Palmas Dr., Fullerton, 7 p.m.                                     |
| July 11   | <b>FRPA Quarterly Dinner Meeting</b> , 6 p.m., China Buffet, 104 W. Orangethorpe Ave.  |
| July 21*  | <b>Movie Night: <i>Rock Island Trail (1950)</i></b> ,* 6:30 p.m. with Wine Tasting at 6 p.m. Fullerton Museum Center Auditorium    |
| July 28   | <b>Combined H&amp;MC Dinner at the Depot and SCSRA Annual Dinner</b> , time TBA.   |
| Aug 21    | <b>H&amp;MC Meeting</b> , St. Paul's Lutheran Church, 111 W. Las Palmas Dr., Fullerton, 7 p.m.                                     |
| Sept 25   | <b>H&amp;MC Meeting</b> , St. Paul's Lutheran Church, 111 W. Las Palmas Dr., Fullerton, 7 p.m.                                     |
| Oct 10    | <b>FRPA Quarterly Dinner Meeting</b> , 6 p.m., China Buffet, 104 W. Orangethorpe Ave.  |
| Oct 20*   | <b>Movie Night: <i>The General (1927)</i></b> ,* 6:30 p.m. with Wine Tasting at 6 p.m. Fullerton Museum Center Auditorium          |
| Oct 23    | <b>H&amp;MC Meeting</b> , St. Paul's Lutheran Church, 111 W. Las Palmas Dr., Fullerton, 7 p.m.                                     |
| Nov 27    | <b>H&amp;MC Meeting</b> , St. Paul's Lutheran Church, 111 W. Las Palmas Dr., Fullerton, 7 p.m.                                     |

\* Dates and movie titles subject to change  
Check [www.scrmf.org](http://www.scrmf.org) for updates

and key for the next 30 years. Another generation of Soviet railroaders quietly scrapped the Russian Big Boy, still sleeping in its locked train shed at Lugansk.



The AA20 4-14-4. Photos from Russian photo page, 1935.

# Southern California Scenic Railway Association

*This year we are planning a joint affair with H&MC and their Dinner at the Depot*

## **2007 Annual Dinner RSVP and Ridenour Award Nomination**

**Use this form to RSVP to the Annual Dinner and nominate a candidate to receive the 15th Clarence Ridenour Award; send to president's address below**

### **ANNUAL DINNER RSVP**

NAME: \_\_\_\_\_

will attend/will not attend (circle one) the 2007 Annual Dinner, to be held at

**Our Cabooses at the Fullerton Metrolink Station!**

**on Saturday, JULY 28, 2007**

**Dinner time TBA**

**(more details will be in the July newsletter)**

Price per person estimated at \$10. Monies will be collected at the dinner.

At this time, we're just looking for a head-count of interested attendees.

**Total No. Attending:** \_\_\_\_\_

---

### **2007 RIDENOUR NOMINATION**

The 15th Clarence Ridenour award will be awarded at the 2007 SCSRA Annual Dinner. This award is given to a current SCSRA associate who displays leadership, inspiration, and dedication to the organization. Candidates are nominated by the association at large and a winner is selected by the SCSRA president. **Mail this RSVP and Ridenour nomination by May 30 to:**

**Gordon Bachlund, SCSRA President**

**312 S. Mountain Ave.**

**Monrovia, CA 91016-3039**

*[you can e-mail your RSVP and the nomination to [gbachlund@earthlink.net](mailto:gbachlund@earthlink.net)]*

I, \_\_\_\_\_, hereby nominate \_\_\_\_\_ to receive the 2007 Clarence Ridenour Award. I believe that he/she should receive it because \_\_\_\_\_

---

---

---

Past Winners: Joe Barilari, Gordon Bachlund, Chell Hurdle, Sue Kientz, Dan Price, Brian Moore, Jim Vicars, Jeff Barrow, Doug Stephens, Gary Herod, Michael Vitale, Greg Smith, George Engelage, and Jim Hoffmann.

# O HOT RAIL! O

is published quarterly at Fullerton, California, and is the official publication of

**THE FULLERTON RAILWAY PLAZA ASSOCIATION, INC., &  
THE SOUTHERN CALIFORNIA SCENIC RAILWAY ASSOCIATION, INC.**

1661 E. Chapman Ave., Unit 1G, Fullerton, CA 92838-5195

Visit us on the web at <http://www.scrmf.org/> & <http://www.scsra.org/>



*FRPA and SCSRA are California Nonprofit Public Benefit Corporations  
IRS Tax Exemption No. 33-0776081 (FRPA) and No. 95-3947766 (SCSRA)*

Editor: Sue Kientz

*Send your letters to the editor to the address above or e-mail [sue@scsra.org](mailto:sue@scsra.org)*

Any article or feature published in *Hot Rail!* may be reprinted in whole or in part provided that proper credit is given the source.



### FRPA BOARD OF DIRECTORS

<i>Chair,</i>	George H. Engelage, IV	
<i>Members,</i>	Gordon R. Bachlund	Susan J. Kientz
	George J. Barlow	Robert Root
	Harold Benash	Paul R. Simons
	Terry Galvin	Stan Swanson
	Norma R. Goble	Michael Vitale
	Richard L. Hopping, O.D.	Dennis White

<i>Chair,</i>	Sue Kientz	(June 2010)	
<i>Members,</i>	Gordon Bachlund	(Jan 2007)	Jerry Price (June 2010)
	Jim Hoffmann	(Sept 2007)	Greg Smith (Sept 2007)
	Ted McConville	(Jan 2010)	Mike Vitale (Sept 2007)

### FRPA CORPORATE OFFICERS

<i>President,</i>	George H. Engelage, IV
<i>Exec. Vice President,</i>	Richard L. Hopping, O.D.
<i>Vice President,</i>	George J. Barlow
<i>Treasurer,</i>	Michael Vitale
<i>Secretary,</i>	Barbara Eldredge
<i>CPA,</i>	Charles A. Munson, CPA

### SCSRA CORPORATE OFFICERS

<i>President,</i>	Gordon Bachlund	(June 2008)
<i>Treasurer,</i>	Mike Vitale	(June 2009)
<i>Secretary,</i>	Greg Smith	(July 2007)

### FRPA HISTORICAL AND MODELING COMMITTEE

<i>Chairman,</i>	Harold Benash
<i>Secretary and Editor,</i>	Dennis White

### APPOINTED OFFICERS, SUPERINTENDENTS AND MANAGERS

<i>Vice President, Museum Relations,</i>	Sue Kientz
<i>Safety Officer,</i>	Jim Hoffmann, <i>Acting</i>
<i>General Superintendent,</i>	Jerry Price
<i>Chief Mechanical Officer,</i>	Gordon Bachlund
<i>Asst. Supt., Rolling Stock,</i>	<i>vacant</i>
<i>Asst. Supt., Electrical/Communications,</i>	Jim Vicars
<i>Operating Superintendent,</i>	Jim Hoffmann
<i>Maintenance of Way Superintendents,</i>	Jeff Barrow, Dan Price
<i>Fund Raising Coordinator,</i>	Sue Kientz
<i>Official Photographer,</i>	Elliot Alper
<i>Film/Digital Presentation Manager,</i>	Tim Dulin
<i>Motion Picture Film Archivist,</i>	Gordon Bachlund
<i>Projectionist Extraordinaire,</i>	Jim Hoffmann
<i>Christmastime Proofreader,</i>	Betty Joseph

### FRPA APPOINTED CHAIRPERSONS

<i>General Meetings,</i>	Stan Swanson
<i>Membership,</i>	Norma R. Goble
<i>RR Days 2007,</i>	Fred Canfield
<i>Movie Nights,</i>	Gordon Bachlund, Jim Hoffmann

### SCSRA BOARD OF DIRECTORS

**Fullerton Railway Plaza Association, Inc.**  
1661 E. Chapman Ave., Unit 1G  
Fullerton, CA 92838-5195

*Address Correction Requested*

PRSR STD
U.S. POSTAGE
<b>PAID</b>
ANAHEIM, CA
PERMIT NO. 815

## IN THIS ISSUE

- **Disney's C.K. Holliday Steam Engine and Kalamazoo Hand Car at Railroad Days 2007.** See cover.
- **Donated Rail Slides at April 11 FRPA Quarterly Dinner.** See page 2.
- **Upcoming Movie Night with Wine Tasting:** April 21, *Emperor of the North*, see cover & calendar, page 6.
- Updates on the cabooses, historical pieces, photos, more!

Postmaster: Please Deliver between April 2-9, 2007