

So. California Railway Plaza Assn. &
So. California Scenic Railway Assn.

present the

Hot Rail!

newsletter



*The latest on efforts to build and maintain
a permanent railroad attraction in Southern California*

Volume IX, Number 4

Winter 2011

FESTIVE NIGHT DRAWS HUGE CROWD TO FULLERTON DEPOT

*By Donna Johnson, Media & Community
Relations Chairman*

Partnering with the city of Fullerton and Metrolink, SCRPA hosted its inaugural Community Celebration on December 10, prior to the Holiday Toy Express 7 p.m. stop at the Train Station.

A solidly packed platform of about 1,500 people wildly applauded the 15th annual show train decked out in 50,000 twinkling lights and featuring a railcar stage filled with Santa, Mrs. Claus and all their helpers.

During our free Community Celebration from 4 to 6:30 p.m. at the east end of the Fullerton Depot, more than 400 people followed a line of bright luminarias along the tracks to enjoy tours of the cabooses and learn about our restoration efforts. A tent at the gateway offered a display of vintage depot modules crafted by our members.

In another tent lighted by lanterns, throngs of kids created colorful Thomas the Tank Engine pages or solved a "Polar Express" word search, while young and old alike stopped by our face-painting booth for sparkly snowflakes and other designs.

Families and couples strolled through the area in steady but manageable numbers – and many voiced praise and appreciation for the fun activities to fill the time while waiting for the Express.



A full moon shines down on SCSRA's AT&SF cupola and SP bay-window cabooses, which were open for tours to show off their recent, substantial interior renovations effected by the SCRPA's Railroad Operations Committee. Photo by Karen Sibrel.

We also served free hot chocolate, cookies and cupcakes to the children – thanks to donations from Santa Fe Café, Patty's Cakes, Judy Lynn Bakery and Ruth Huson.

And to everyone's amazement, the Express arrived 15 minutes early – to huge cheers from the crowd! This year's musical show, "Home for the Holidays," drew more cheers and applause.

Fullerton firefighters also turned out at the depot to collect a great many donations of unwrapped toys for

Continued on page 2

Let's take an excursion by road and rail

SCRPA is offering an all-day excursion by bus and train on February 25, 2012, from the Fullerton Depot to the Fillmore Depot, where you'll climb aboard a Fillmore & Western Railway Co. train for a scenic ride to Santa Paula, 65 miles northwest of Los Angeles in Ventura County.

Lunch will be served along the way and the stop in Santa Paula will include a docent-led tour of the California Oil Museum, which traces the state's history of oil exploration and production. You can also have tours of nearby Agriculture and Art museums.



On the way back to Fillmore, we'll stop at The Loose Caboose gift emporium, known for its vast assortment of model trains in all the popular gauges.

Thanks to Membership Co-Chair Peggy Benash for making arrangements for this outing!

For more information, see www.fwry.com or www.loosecaboose.com and www.venturamuseum.org/AgricultureMuseum/tabid/289/Default.aspx

SEE THE INSERT inside this *Hot Rail* for details and an RSVP form, due January 20, 2012.

Continued from cover

the Spark of Love campaign, co-sponsored by ABC7 and Southland firefighters.

After the train departed amidst a cloud of “drifting snow,” SCRPA members and friends wrapped up our celebration area and gathered around the cabooses for a delightful – if chilly – repast organized by the Benashes.

In all, there was general agreement that the evening was a BIG SUCCESS, and we’d like to make this a new SCRPA tradition.

One of the big reasons that all the activities, especially the caboose tours, ran so smoothly was the large number of “Santa’s helpers.” Many thanks to the following volunteers:

Elliott Alper, Gordon Bachlund, Matthew Band, Jack Barich, Harold and Peggy Benash, John Bouman, Rose Canataro, Edith and Lee Culp, Eric Edborg and Pat Gibbons, Jim Hoffmann (Santa Fe Claus), Pat and Dick Hopping, Bryan Hunnell, Donna Johnson, Ted Johnson, Sue Kientz and Martin Kluck, Don and Carole Lawver, Chris McCarthy, Wayne Musgrove, David and Kathy Norris, Carl Pftzing, Mary and Stu Proctor, Julia Proctor, Curtis Raymond, Tommy Reminiskey, Todd Scott, Karen and David Sibrel, Roger Van Oppens, Mike and Charity Vitale, AND Kathy and Dennis White.

See more *Community Celebration* photos on pages 8-9



SCRPA volunteers staffed a number of tents that offered fun freebies to the public, like face painting. Photo by Karen Sibrel.

PRESIDENT’S MESSAGE

In a new, swap-out agreement, SCRPA members are now entitled to membership privileges for exhibits and other functions at the Muckenthaler Cultural Center in Fullerton. Just identify yourself as an SCRPA member to qualify – and enjoy.

Likewise, Muckenthaler members are entitled to SCRPA membership perks.

Our first Community Celebration at the Fullerton Depot — held on December 10 in conjunction with Metrolink and the City of Fullerton, prior to the Holiday Toy Express’ arrival — was a huge success.

My thanks to all those volunteers who helped with SCRPA’s 2 ½ hour free presentation, including the caboose tours, face painting, kids’ train coloring booth, module displays and the children’s refreshments.

Southern California Railway Plaza Assn.

Our Vision Is

Promotion of educational programs, activities, and venues for people of all ages, dedicated to the preservation of the rail heritage of Southern California.

Our Mission Is

Education of the public, providing an historical insight into the numerous contributions that railroads have made to the development and growth of Southern California from the 19th century forward.

Our Goals Are

- Successful development of the Southern California Railroad Experience
- Production of the annual Railroad Days and Children’s Rail Safety Poster Contest community events
- Sponsorship of historical research and modeling of significant sites and structures, publication of the *Hot Rail!* newsletter, and presentation of quarterly dinners and speakers on topics of member interest

The SCRX Vision Is

To be the premier destination for presenting the spirit of Southern California through its railroad heritage.

The SCRX Mission Is

To provide, through our ideas, exhibitions, and programs, engaging educational and entertaining experiences to Southern California residents and visitors.

The SCRX Goals Are

To fulfill the Vision and Mission by developing and presenting programs that capture the spirit of Southern California through its railroad heritage and by partnering with governmental and private entities to create an experiential destination.

Donations from Barnes & Noble, the Santa Fe Cafe, Patty’s Cakes and Judy Lynn Bakery, are greatly appreciated. Thanks too to Ruth Huson for baking six dozen train-shape holiday cookies. The kids loved them.

Special thanks to Paula Newman and Madeline Thomas (La Mirada Arts Colony); Dannielle Mauk, Ashley Glass and Stefani Tash (City of Fullerton); Sgt. Craig Odom and officers Mike Hagen, Cherokee Howard and Randall Richards, Fullerton Police Department; and Jim Henderlong, Luis Zarza and Claudia Ziebell of Metrolink.

With their expertise and input, the event was a rousing success.

Also, a big thank you to the Railroad Operations Committee and its volunteers who worked diligently over the past months to ready the cabooses for the event.

In another holiday community connection, SCRPA members loaned model train layouts for display in Fullerton Ace Hardware, 117 W. Commonwealth Ave. The track, provided by R-Hobby in La Habra, circled amongst several decorated Christmas trees.

The trains were changed about once a week to give shoppers a new experience. And lots of folks stopped by to enjoy the spirit of the season.

Happy New Year!
Harold Benash

AT&SF IMAGES ON VIEW AT JANUARY 11 DINNER MEETING

By Donna Johnson, Community & Media Relations Chair

In the spotlight at our winter Members' Quarterly Dinner program will be railfan Ron Grau, who will present a slide show focused on a variety of AT&SF photos taken in Cajon Pass and the surrounding areas.

We'll also learn the latest news about Railroad Days 2012 in Fullerton on May 5 & 6 from Chairman Jeff Schulze.

And our own Greg Smith will entertain us with a keyboard medley of holiday tunes.

Our winter general membership meeting is on Wednesday, January 11, 2012, at the Sizzler restaurant in Fullerton. It will start with a mixer at 6 p.m., followed by dinner at 6:30 p.m. and then the program and a brief meeting.

Members and guests will again order and pay independently for their meals. Prices range from \$7 to \$23, plus beverages — with daily specials and a Senior discount available.

No RSVPs are required.

The Sizzler, located at 1401 N. Harbor Blvd. (north of Berkeley Avenue), also serves beer and wine. Menu nutrition and allergy information is listed by item at www.sizzler.com. The Fullerton Sizzler phone is 714-738-5018.

HISTORY & MODELING COMMITTEE WINTER REPORT

Report of Committee Activities

By Dennis White, H&MC Secretary and Editor

The History & Modeling Committee activities continue to be a busy and fun part of belonging to SCRPA. Our members spend time digging for historic information and finding ways to pass this information on to SCRPA's large membership base.

One way we help visualize our rail history discoveries is via construction of dioramas, which can be integrated into modular model railroads.

H&MC is building a corner module inspired by UP's historic Hermosa Tunnel near the summit of Sherman Hill in Wyoming. Designed in the spirit of its namesake, it differs due to the needs of a modular model railroad. The diorama features the rock outcroppings and the general scenery of the high-altitude desert plains of Wyoming, complete with snow fences, short scrub and almost no trees.

Two of H&MC's dioramas will be on loan to the Fullerton Museum Center's winter exhibit honoring the citrus packinghouses of Orange County. The model buildings in the dioramas are all scratch-built by our master model builder, Doug Archer.

H&MC members helped with SCRPA's co-sponsorship of the Metrolink Holiday Toy Express visit to Fullerton on December 10. Three-fourths of our H&MC

Continued on page 4

California's 'second gold rush' exhibit focuses on citrus industry, includes SCRPA modules

Through vivid colors and bold type they tell the history of California's "Second Gold Rush" — the rise of the citrus industry that comprised an integral part of the state's history and economy from the 1880s through the middle of the last century.

"They" are the highly decorative labels that graced the boxes of citrus produce shipped from California to all corners of the nation, and they are among the items displayed in "Citrus: California's Golden Dream" at the Fullerton Museum Center.

Few developments helped spark the growth of young Orange County communities such as Fullerton as the citrus industry. A key player in that growth was Charles Chapman, Fullerton's first mayor, who revolutionized the citrus industry in the 1890s by championing the cause of the Valencia orange.

Because of its "keeping" qualities and late ripening period, the Valencia proved an ideal summer orange. Farmers throughout the area copied Chapman's lead and agriculture quickly became the new community's leading industry, with Fullerton packinghouses shipping as much as \$15 million in citrus crops in banner years.

At one time, Fullerton boasted of having more orange groves than any other Orange County city. Today, however, it is estimated fewer than 50 acres of groves remain in the city.

"Citrus: California's Golden Dream," features an array of fruit labels, historical books, maps, postcards, farm machinery, packing crates and other citrus industry memorabilia.

Items on loan for the exhibit come from such organizations as the California Citrus State Historic Park, Fullerton Arboretum, Bowers Museum of Cultural Arts, the Homestead Museum, as well as from individuals including Gordon McClelland and local businessmen Mike Ritto and Jack Franklyn.

Models of vintage packinghouses on display were crafted by members of the Southern California Railway Plaza Association.

WHAT: "Citrus: California's Golden Dream"

WHEN: Through March 25

WHERE: Fullerton Museum Center, 301 N. Pomona Ave., east of Harbor Boulevard

HOURS: Noon-4 p.m. Tuesdays, Wednesdays and Fridays-Sundays; and noon to 8 p.m. Thursdays.

ADMISSION: \$4 for adults, \$3 with student ID and senior citizens 65 and older, \$1 for ages 6 to 12; and free to children under 5 and to FMC members. Admission is \$2 for all visitors from 4-8 p.m. the first Thursday of each month.

INFORMATION: 714-738-6545

Continued from page 3

members are also active within the Railroad Operations Committee (ROC), and the effort to get the two cabooses ready for the SCRPA's Community Celebration boiled down to extra work parties throughout the fall months, concluding with almost daily sessions the week before the event.

H&MC/SCRPA participated in the following shows in November and December, 2011:

OERM Thomas the Tank Engine, Perris, CA	Nov. 5 & 6, Nov. 11, 12 & 13
Cal Stewart, Tinplate Show, Pasadena, CA	Nov. 19 & 20
Great Train Expo, Pomona, CA	Dec. 10 & 11
SCRPA's Community Celebration /Metrolink Holiday Toy Express, Fullerton, CA	Dec. 10

In addition, H&MC will participate January 22 & 23, 2012, at the Great Train Expo at Anaheim Convention Center.

The committee is always looking for members. If local history, rail history, railfanning or model railroading (any scale), interest you and you would enjoy fellowship with others who share these interests, we invite you to become a part of our growing committee. It is a great way to become an active member of the SCRPA.

Meetings are held 7 p.m., the fourth Tuesday of each month (except December) at St. Paul's Lutheran Church, (corner of Las Palmas Drive and Harbor Boulevard), Fullerton, California. Please contact Dennis White (714-400-44939) or Harold Benash (714-525-6266) for directions or any questions regarding H&MC.

VOLUNTEERS DEVOTE MANY HOURS AND HONE SKILLS ON TRANSFORMING CABOOSES

By Stu Proctor, Railroad Operations Committee Chairman

Thanks to all the members for putting in as much time as they did on December 10, helping set up and cleaning the area around the cabooses for our tours, which drew more than 400 people to check out the two cars dressed up for SCRPA's Community Celebration.

A tip of the Santa hat to Marty Kluck and Jack Barich for putting up all the Christmas lights. With any luck, next Christmas the cabooses will be sporting a new paint job and looking even better.

Meanwhile, work parties in late November and early December had lots of last-minute jobs that needed completing before the December 3 ROC Christmas Train Watching and the December 10 Spark of Love-Metrolink Holiday Toy Express events, both of which featured caboose tours.

On November 19, ROC members began an hour earlier than usual at 8 a.m. and worked straight through 'til 3:30 p.m., completing almost everything we had on our "to do" list.

Here's what we accomplished:

- Rebuilt the battery vault on SP 4049, renewed battery clamps and added anti-corrosive "felts," installed cement-lined battery vaults for better protection of both cars and the batteries, completed window sills in the cupola of the ATSF 999110, which look beautiful and are a testament to the skill and perfection of Martin Kluck's work.
- Installed new stove pipe in ATSF 999110; installed shelves in broom closet of SP 4049, making room for the industrial vacuum in the bottom of the closet; moved both cars to the west end of the siding, allowing better people access to the cars, plus opens the area for better ingress and egress through the parking lot man-gate.
- Built a bridge between the two cabooses, so people don't have to navigate the steep steps down and back up to get from one car to the next. Our traffic flow began in the east end of SP 4049 walking through, traversing the bridge to the ATSF 999110, walking through and exiting the west end of the 110. The bridge is fully portable and can be removed with little effort any time the cars need to be moved.

We also rerouted the 110-volt power to the cabooses, burying it under the ballast so it is no longer a trip hazard.

And we welcomed Eric Shishima, longtime member of Orange County Modular Engineers, to SCRPA and the ROC team.

The cabooses also continue to attract casual visitors. As we worked on November 19, we had three different sets of visitors and \$30 donated to our kitty.

One group was a pair of grandparents, two of their children and four grandchildren, who were really excited about being in the cabooses. One of the children, a 6-year-old girl, saw our sign-in sheet and just had to pick up a pencil and sign the whole family in.

A second group (a grandmother from Fullerton, plus her daughter and two granddaughters from Albuquerque, New Mexico) wanted their picture taken on the platform of the caboose. The sun was just right and we helped them get a good family picture.

A FINAL THOUGHT: We just finished our first year overseeing stewardship of the wonderful SP and ATSF relic cabooses. The transformation of the interior of 999110 is remarkable in just 12 months.

— Dennis White also contributed to this report

WWW.TRAINWEB.COM

Rail Travel - Rail Industry
Model Railroading - Railfanning



Most extensive and visited railroad website in the world
including live rail video at www.RailCams.com !

PLANS FOR RAILROAD DAYS 2012 ARE ON TRACK FOR FULLERTON STATION ON MAY 5 & 6

Railroad Days 2012 Chairman Jeff Schulze reports that his committee is continuing to lineup volunteers, vendors and sponsors for the May 5 & 6 weekend at the Fullerton Train Station.

In October, Fullerton's City Council endorsed the 12th edition of the free community weekend on a 4-0 vote.

"We're rolling right along and lining up equipment for display," Schulze said. "We're seeking donations and talking positively with rail agencies, including contacts with Metrolink and Disney."

Schulze is also seeking SCRPA volunteers and donations from the general membership. Pledge forms are available by calling 714-278-0648 or emailing info@scrpa.net.

Anyone interested in reserving space as a vendor or exhibitor may request a Participants Notice by contacting Schulze at 714-985-9007 or brgmstrs@pacbell.net.

For updates on Railroad Days plans, check our website at www.scrpa.net.



4,671-mile journey through 20 states on the "Wisconsin" with spectacular fall scenery.

The Wisconsin was built in 1948 for the president of the Milwaukee Road. He was not too well liked and the car had bullet proof windows and reinforced outer skin. It was used by the Milwaukee Road, the Union Pacific, the Soo Line and finally back to the Milwaukee Road. It was sold to private owners in 1991 and recently sold to our friends, the current owners, in 2008.

The car has been restored by L&C Rail Car Restoration in Lancaster, South Carolina, and has the original Milwaukee Road colors – bright orange with blue accents.

It is configured with four bedrooms, a dining area that seats eight, a lounge area that also seats eight, a rear platform that can seat three or four on folding chairs, a galley and a cabin for a chef.

Three of the bedrooms have a toilet and sink. There is a small bath adjacent to the fourth bedroom with toilet, sink and shower. There is another shower in the hall next to the galley and the chef has a toilet and sink in his cabin. Our chef prepared all meals while we were traveling and breakfasts while we were stopped in stations or yards.

In early October we flew to Charlotte, North Carolina, to begin our 4,671-mile rail journey. The Wisconsin

Continued on page 6

ALL ABOARD FOR A 16-DAY AUTUMN RIDE ON THE RAILS

By Tom & Barbara Eldredge, SCRPA members

If you like to travel by rail, it helps if you know an owner of a private rail car. We do, and we completed a



Above, SCRPA members Tom and Barbara Eldredge, standing on the back porch of the private car Wisconsin. Photo courtesy of Tom and Barbara Eldredge



Two interior views from the private car Wisconsin, shown above. Photos courtesy of Tom and Barbara Eldredge

Continued from page 5

was attached to the back of Amtrak's The Carolinian, Train #80. We pulled out at 7 a.m. and went through Raleigh and Richmond to Washington, D.C.

After arriving (on time) in Washington, we were unhooked from the Carolinian and put on a spur track in the station with power hookup. We could leave the car and go through the station and shop or get our dinner.

The next day, a friend picked us up and we had lunch at Mt. Vernon, George Washington's home. Back on board, the car left at 6:30 p.m., attached to the back of the Crescent, Train #19, and went through Charlotte (late at night), Atlanta and Birmingham to arrive at New Orleans at about 7 p.m. We left the car and went to a hotel near the French Quarter.

For the next two days, we poked around New Orleans and reboarded the car at the station at 6:30 a.m. on the third day.

The car had been attached to a string of 21 private cars that had their own engine. For the next four days we were part of that special train. It was called The Kansas City Chief Special Train and ran on freight lines, primarily BNSF.

We started by going along the New Orleans Belt Railroad that followed the Mississippi River to the French Quarter. Then we went through Southport Junction, Lafayette, Beaumont, Houston, Alvin to Galveston, Texas, arriving after 9 p.m. The train parked at the Galveston Museum area next to the train station. The next morning everyone toured the museum and wandered around Galveston.

The Special Train left Galveston about noon and went through Temple, ending in Fort Worth for the night. Off at 8 a.m. for Oklahoma City and Arkansas City to Newton, Kansas, for the night.

The following day we went to Kansas City, Missouri, where the train was divided and both halves were hooked up to power for the next few days. Kansas City was where the American Association of Private Rail Car Owners (AAPRCO) convention was held. We went to the convention hotel to stay.

There were meetings at the hotel, and in the evening half of the private cars were open to the convention-goers for touring. The next evening the other half of the cars were available for viewing. Food and drinks were served in the open cars; there were some very fancy cars on view.

The last day, a string of seven cars and an engine took all who wanted to go to the BNSF yards and repair facility in Topeka. That evening we went back to the Wisconsin and got ready for the banquet, which was held in the Kansas City Union Station.

Later that evening the Special Train was broken up and the Wisconsin was attached to the rear of the Southwest Chief, Train #4, and left Kansas City about 8 a.m., bound for La Plata, Ft. Madison, Galesburg, Princeton, Mendota and Naperville, getting into Chicago in the late afternoon.

We had lunch the next day at Lawry's and walked along Michigan Avenue. We left Chicago late in the afternoon attached to the Capital Limited, Train #30, and



Tom Eldredge poses beside the Wisconsin. Photo by Barbara Eldredge

traveled through Elkhart, Toledo, Sandusky, Cleveland, Pittsburg and Harpers Ferry, arriving in Washington, D.C., about noon.

We walked to the Capitol and had a look at the new Visitors Center and Capitol Tour. The trip from Pittsburg to Washington was mainly in daylight, and the fall foliage and topography of the land were spectacular.

After a night in the Station, we left Washington attached to the Carolinian, Train #79, and went through Richmond and Raleigh, arriving in Charlotte after 9 p.m. We left the Wisconsin and went to our hotel, and the next morning flew home. An enjoyable 16 days.

WESTERN NIGHT AT THE MOVIES TRAVELS TO OKLAHOMA

By Gordon Bachlund, Movie Nights Chair

The SCRPA free members' Retrospective Screening Series will open the new year with a double-bill on Saturday, January 28, 2012. We'll begin at 6 p.m. with a wine-tasting on the Fullerton Museum Center patio, 301 N. Pomona Avenue. Sue Kientz is the wine sponsor.

Moving inside to the museum's auditorium, a 1917 silent Mack Sennett two-reeler "Teddy at the Throttle" will open the evening's films, featuring "Keystone Teddy" the Wonder Dog, arguably the first canine superstar of the American cinema. The star of at least 18 movies, Teddy eventually became one Sennett's best-paid actors. This film is Teddy's most famous.

Stars include Gloria Swanson and Bobby Vernon and the film co-stars future Best Actor Academy Award-winner Wallace Beery as the heavy

It features absurd chase scenes, a race against time to save the heroine from being run over by a train, slapstick and satire.

The film will be accompanied by our longtime member Greg Smith on the organ.

Next up is *Home in Oklahoma*, a b/w Republic feature movie from 1946, which runs 72 minutes. This

Public Domain western murder mystery stars Roy Rogers as the editor of a small town newspaper, trying to protect the young heir to a large cattle ranch whose wealthy owner died under mysterious circumstances, and Dale Evans as a big city reporter whose "help" Roy would like to do without.

Dale arrives on a motorcar-powered (AT&SF M.155) branch-line train, and there is nifty fight on the flatcars of a steam-powered freight train toward the end. All are 1940s Atchison, Topeka & Santa Fe!

Gabby Hayes is there, too — along with Trigger and all the songs. As with many Roy Rogers westerns, the Sons of the Pioneers and the Flying "L" Ranch Quartet are part of the show.

HERMOSA TUNNEL CORNER MODULE IS TAKING SHAPE

By Stu Proctor, Railroad Operations Committee Chairman

A small but creative group of men has been meeting at Harold Benash's house most Tuesday evenings since last April to build an HO corner module inspired by the Hermosa Tunnel near Sherman Hill, Wyoming.

The builders are members of SCRPA's Historical & Modeling Committee and the Orange County Modular Railroaders. The corner module will be used by the H&MC, along with four other previously built modules, at Railroad Days 2012 in Fullerton on May 5 & 6. They will be attached to one end of the OCMR's layout and be displayed in the SCRPA booth. The other four modules show various aspects of rail history in Fullerton and La Habra, circa the early 1950s. The modules are also used as static displays at smaller shows.

Rather than being an exact copy of the Hermosa Tunnel, the module is being built as a representation of it. For example, it's shorter in length and has four tracks instead of two, due to OCMR module specifications.

As a bit of whimsy, the builders are going to put a helipad in the



center, on top of the mesa. There will be a flyable model helicopter used with the pad.

Currently, the module is about half-built, with the track laid and wired, and work just starting on the mesa, tunnels and portals.

Experienced module builders might ask why it is taking so long to build this? The answer is partly that we took a couple of months off during the summer for vacations and such. The other part is that, well, when a bunch of railroad enthusiasts get together, sometimes the conversation gets in the way of the work, or should that be the other way around?

While the main goal of these work sessions is to build display modules for the H&MC, it's also a way to just get-together, have some fun and let the less experienced builders learn from the journeyman builders.

The work has been put on hold now until after the first of the year, but come 2012 they will be diligently putting the finishing touches on this module and getting it ready for next May's Rail-

road Days. Unless of course, someone has a really good railroad yarn to spin.

Go to page 10 for a photo of the western portal of the Hermosa Tunnel at Sherman Hill, Wyoming



At a recent work party at Harold Benash's house, module builders plan the next step in the process: (r-l) Eric Shishima, Doug Archer, Ted Johnson, Marty Kluck and Harold Benash. Photo by Stu Proctor

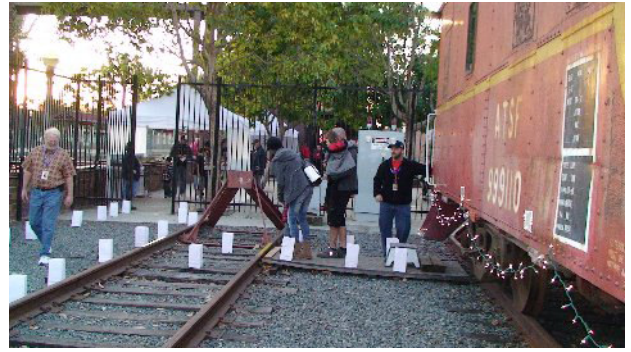
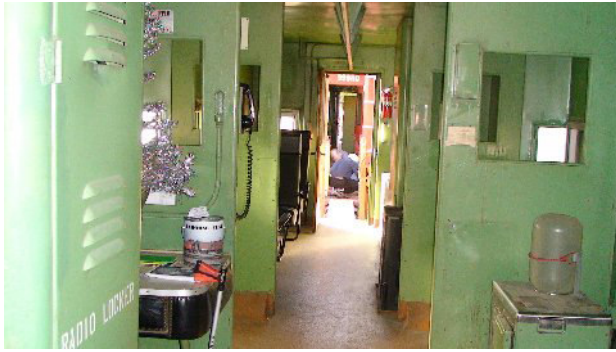
SCRPA's First Community Celebration / Holiday Toy Express

Photos by Karen Sibrel



Photos by Elliott Alper





These photos are in color on the web!
Read the *Hot Rail!* in PDF at www.scrpa.net



Western portal of the Hermosa Tunnel at Sherman Hill, Wyoming. Photo courtesy of RailPictures.net © Beat Schneuwly

2012 Calendar

- | | | | |
|---------------------|---|----------------|---|
| Jan 11, 2012 | SCRPA Quarterly Dinner Meeting , 6 p.m., Sizzler, 1401 N. Harbor Blvd., Fullerton | Jun 23 | Annual Dinner at Depot , Cabooses, Fullerton Train Station, 6 p.m. |
| Jan 21 | ROC Meeting & Work Party , 9 a.m., Cabooses, Fullerton Train Station | Jul 11 | SCRPA Quarterly Dinner Meeting , 6 p.m., Sizzler, 1401 N. Harbor Blvd., Fullerton |
| Jan 24 | H&MC Meeting , St. Paul's Lutheran Church, 111 W. Las Palmas Dr., Fullerton, 7 p.m. | Jul 21 | ROC Meeting & Work Party , 9 a.m., Cabooses, Fullerton Train Station |
| Jan 28* | Movie Night: <i>Home in Oklahoma (1946)</i> ,* 6:30 p.m. with Wine Tasting at 6 p.m., Fullerton Museum Center Auditorium (FMCA), 301 N. Pomona Ave., Fullerton | Jul 24 | H&MC Meeting , St. Paul's Lutheran Church, 111 W. Las Palmas Dr., Fullerton, 7 p.m. |
| Feb 18 | ROC Meeting & Work Party , 9 a.m., Cabooses, Fullerton Train Station | Jul 28* | Movie Night: <i>Diamond Jim (1935)</i> ,* 6:30 p.m. with Wine Tasting at 6 p.m., FMCA |
| Feb 28 | H&MC Meeting , St. Paul's Lutheran Church, 111 W. Las Palmas Dr., Fullerton, 7 p.m. | Aug 18 | ROC Meeting & Work Party , 9 a.m., Cabooses, Fullerton Train Station |
| Mar 17 | ROC Meeting & Work Party , 9 a.m., Cabooses, Fullerton Train Station | Aug 28 | H&MC Meeting , St. Paul's Lutheran Church, 111 W. Las Palmas Dr., Fullerton, 7 p.m. |
| Mar 27 | H&MC Meeting , St. Paul's Lutheran Church, 111 W. Las Palmas Dr., Fullerton, 7 p.m. | Sep 15 | ROC Meeting & Work Party , 9 a.m., Cabooses, Fullerton Train Station |
| Apr 11 | SCRPA Quarterly Dinner Meeting , 6 p.m., Sizzler, 1401 N. Harbor Blvd., Fullerton | Sep 25 | H&MC Meeting , St. Paul's Lutheran Church, 111 W. Las Palmas Dr., Fullerton, 7 p.m. |
| Apr 14 | ROC Meeting & Work Party , 9 a.m., Cabooses, Fullerton Train Station | Oct 10 | SCRPA Quarterly Dinner Meeting , 6 p.m., Sizzler, 1401 N. Harbor Blvd., Fullerton |
| Apr 24 | H&MC Meeting , St. Paul's Lutheran Church, 111 W. Las Palmas Dr., Fullerton, 7 p.m. | Oct 20 | ROC Meeting & Work Party , 9 a.m., Cabooses, Fullerton Train Station |
| Apr 28* | Movie Night: <i>The Pink Panther (1963)</i> ,* 6:30 p.m. with Wine Tasting at 6 p.m., FMCA | Oct 23 | H&MC Meeting , St. Paul's Lutheran Church, 111 W. Las Palmas Dr., Fullerton, 7 p.m. |
| May 5-6 | Railroad Days , 9 a.m.-5 p.m., Fullerton Train Station | Oct 27* | Movie Night: <i>A Shot In The Dark (1964)</i> ,* 6:30 p.m. with Wine Tasting at 6 p.m., FMCA |
| May 19 | ROC Meeting & Work Party , 9 a.m., Cabooses, Fullerton Train Station | Nov 17 | ROC Meeting & Work Party , 9 a.m., Cabooses, Fullerton Train Station |
| May 22 | H&MC Meeting , St. Paul's Lutheran Church, 111 W. Las Palmas Dr., Fullerton, 7 p.m. | Nov 27 | H&MC Meeting , St. Paul's Lutheran Church, 111 W. Las Palmas Dr., Fullerton, 7 p.m. |
| Jun 16 | ROC Meeting & Work Party , 9 a.m., Cabooses, Fullerton Train Station | Dec 1* | SCSRA Christmas Train-Watching Party , Cabooses, Fullerton Train Station, 2-5 p.m. |

* Dates and movie titles subject to change. Check www.scrpa.net for updates

SCRPA BOARD UPDATE

The board conducted its annual election of officers at the Nov.14 meeting, with a Nomination Committee report presented by Chairman Stu Proctor.

Barbara Eldredge asked to discontinue the dual role of secretary/treasurer but is willing to continue as treasurer. Her request was approved.

By a secret ballot, all the officers were unanimously re-elected to serve another one-year term, effective in January 2012.

President Harold Benash appointed SCRPA member Mary Proctor as board secretary.

Following a review of board members' time of service by Dick Hopping and Dennis White, it was determined that George H. Engelage IV was the only member whose term is expiring in January 2012. He was unanimously elected to serve a three-year term.

Congratulations to our dedicated team!

'TIS THAT TIME FOR RENEWING MEMBERSHIPS

By Peggy Benash, Lauri Schulze and Kathy White, Interim Membership Co-Chairs

Great news for SCRPA!

Membership renewals, which are due January 1, 2012, are way ahead of last year, with most members having already mailed their 2012 remittances.

The level of giving has also increased, a positive indication that members appreciate the announcement of Railroad Days 2012 in Fullerton, SCRPA's added exposure through participation with Knott's Berry Farm train exhibit, our Community Celebration with Metrolink's Holiday Toy Express, and added excursions to interesting SoCal venues.

If you have not yet done so, please mail your renewal today – see form below.

Continued membership support is needed to maintain and grow the Southern California Railway Plaza Association.

ANNUAL MEMBERSHIP APPLICATION

SOUTHERN CALIFORNIA RAILWAY PLAZA® ASSN., INC.



Membership Levels

Please check appropriate level

BRAKEMAN	<input type="checkbox"/>	\$25
CONDUCTOR	<input type="checkbox"/>	\$50
ENGINEER	<input type="checkbox"/>	\$100
YARDMASTER	<input type="checkbox"/>	\$250
TRAINMASTER	<input type="checkbox"/>	\$500
BENEFACTOR	<input type="checkbox"/>	\$600+

PLEASE PRINT

Name: _____

Address: _____

City: _____ State: _____ Zip: _____

E-mail: _____ Phone: _____

Please send this application with the appropriate check or money order payable to:

SCRPA, P.O. Box 5195, Fullerton, CA 92838-5195

Dues are based upon a calendar year

Southern California Railway Plaza Association, Inc.
1661 E. Chapman Ave., #1G
Fullerton, CA 92831

Address Correction Requested

PRSR STD
U.S. POSTAGE
PAID
ANAHEIM, CA
PERMIT NO. 815

IN THIS ISSUE

- See **AT&SF Slide Show at Jan. 11 Dinner Meeting**; see page 2. No RSVP needed.
- **Upcoming Movie Night**: Saturday, Jan. 28, *Home in Oklahoma*; see page 4
- **Photos and story on successful Community Celebration**; see cover article and more photos on pages 8-9
- **Time to renew memberships!** See page 11
- **Road and rail excursion to Fillmore & Western Railway**; see cover and insert
- **Full 2012 Calendar on page 10**
- Plus a peek into a private car ride, more modeling progress, and cabooses update

Postmaster: Please Deliver between January 1-8, 2012

○ HOT RAIL! ○

is published quarterly at Fullerton, California, and is the official publication of
**THE SOUTHERN CALIFORNIA RAILWAY PLAZA ASSOCIATION, INC., &
THE SOUTHERN CALIFORNIA SCENIC RAILWAY ASSOCIATION, INC.**
1661 E. Chapman Ave., Unit 1G, Fullerton, CA 92831 / E-mail: info@scrpa.net
Visit us on the web at <http://www.scrpa.net/> & <http://www.scsra.org/>



*SCRPA and SCSRA are California Nonprofit Public Benefit Corporations
IRS Tax Exemption No. 33-0776081 (SCRPA) and No. 95-3947766 (SCSRA)*

Editor: Sue Kientz

Send your letters to the editor to the address above or e-mail suekientz@earthlink.net

*Any article or feature published in *Hot Rail!* may be reprinted in whole or in part provided that proper credit is given the source.*



SCRPA BOARD OF DIRECTORS

Chair, Harold Benash
Members, Gordon R. Bachlund Donna Johnson
Fred Canfield Stuart Proctor
Barbara Eldredge Jeff Schulze
George Engelage IV Michael Vitale
Terry Galvin Dennis White
Richard L. Hopping

SCRPA CORPORATE OFFICERS

President, Harold Benash
Vice Presidents, Richard L. Hopping and Dennis White
Secretary, Mary Proctor
Treasurer, Barbara Eldredge

SCRPA HISTORY AND MODELING COMMITTEE

Chairman, Harold Benash
Secretary and Editor, Dennis White

SCRPA RAILROAD OPERATIONS COMMITTEE

Chairman, Stuart Proctor

SCRPA APPOINTED CHAIRPERSONS

Membership, Margaret Benash, Lauri Schulze,
Kathy White (*Acting*)
Community & Media Relations, Donna Johnson
Railroad Days 2012, Jeff Schulze
Movie Nights, Gordon Bachlund, Jim Hoffmann

SCSRA BOARD OF DIRECTORS

Chair, Sue Kientz (seat expires June 2014)
Members, Gordon Bachlund (Jan 2015) Stuart Proctor (Jan 2015)
Harold Benash (Dec 2013) Michael Vitale (Sept 2013)
Jim Hoffmann (Sept 2013) Dennis White (Dec 2013)
Ted McConville (Jan 2014)

SCSRA CORPORATE OFFICERS

President, Gordon Bachlund (June 2014)
Treasurer, Michael Vitale (June 2012)
Secretary, Jim Hoffmann (June 2012)

APPOINTED OFFICERS, COMMITTEE CHAIRS, AND MANAGERS

Vice President, Sue Kientz
Railroad Operations Chairman, Stuart Proctor
Cabooses Docent Committee Chairman, Jim Hoffmann
Cabooses Maintenance Chairman, Mike Vitale
Fund Raising Chairman, Harold Benash
Publications Committee Chairman, Sue Kientz
Key Control Officer, Dennis White
Official Photographer, Elliott Alper
Film/Digital Presentation Manager, Jim Hoffmann
Motion Picture Film Archivist, Gordon Bachlund